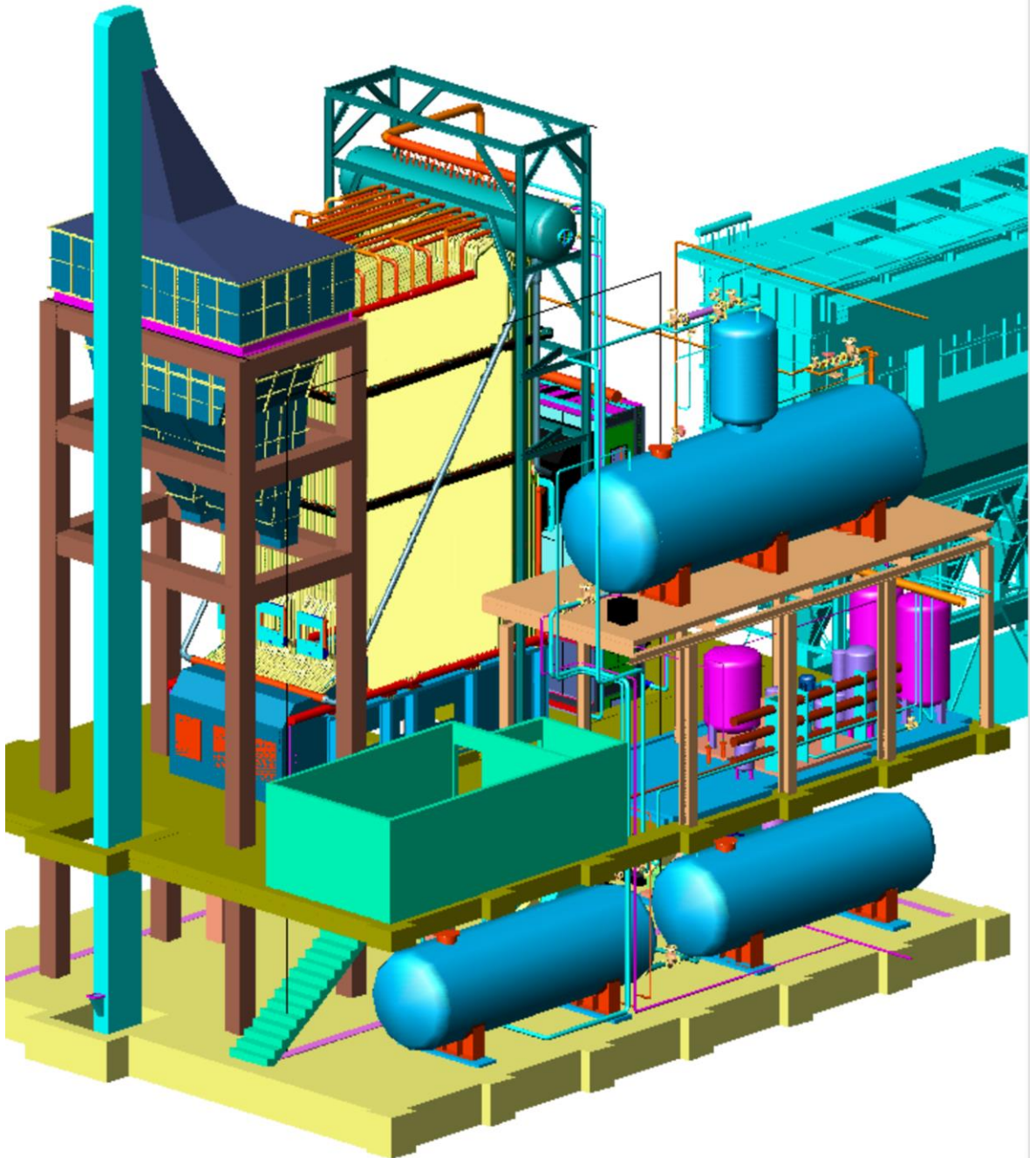


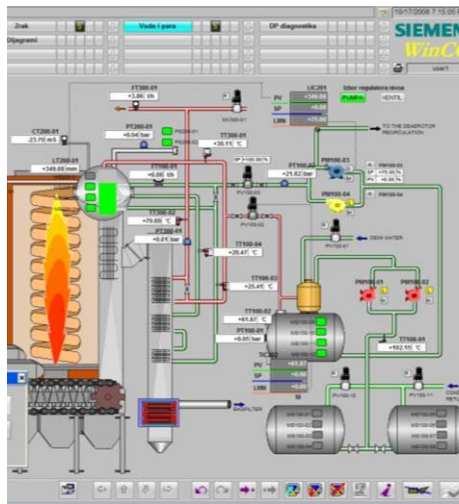
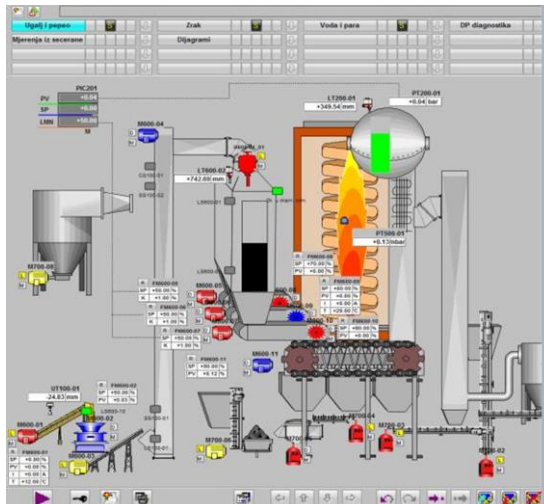
reference

ELCOM d.o.o. is specialized in Totally Integrated Automation (TIA), containing electrical engineering and software development for the automation of production processes and machines, production of MCC and control cabinets as well as onsite installation, commissioning and acceptance testing (FAT, SAT, SIT)



Automation of coal fired steam producing boiler

Customer: Sugar refinery Studen-Agrana, Brčko BIH



Certificates

We have proven our competence as Siemens Solution Partner Automation in the following areas:

- Automation System SIMATIC
- Human Machine Interface SIMATIC HMI
- Process Control System PCS7

Process description

The system is designed to produce 30 t/h, 13 barg, 205°C steam. Level +0.00 and +4.50 level of the boiler house is designed as reinforced concrete and the other parts are designed as steel frame.

At the front side of the boiler house coal handling and coal feeding system is placed. The handled coal is stocked in the coal bunker which is placed in the boiler house, front side of the boiler.

At the rear side of the boiler house a bag filter, ID fan and stack is placed. At the left side of the boiler house Ash bunker is placed to collect the ash produced at the boiler.

Ash bunker is designed high enough to drive the truck under the bunker to discharge the ash collected.

Challenge

Implementation of a cost efficient and user friendly process control system with as less as possible classical cabling which have to result in a very fast and

easier cabling, engineering and commissioning of a very high level.

Very detailed diagnostics and intuitive representation of current step for fast fault analysis and low deadlock times.

Robust solution to endure harsh environmental conditions and 24h 7 days a week work.

Solution

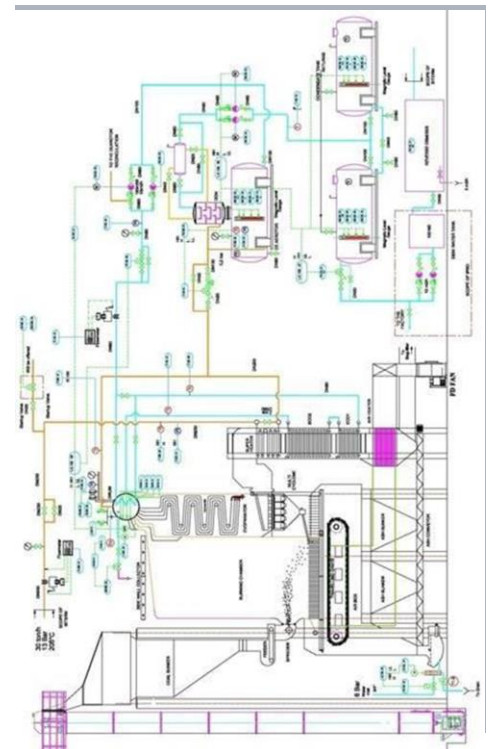
The solution is a totally integrated automation architecture with PROFIBUS based topology. Distributed ET200M stations with PROFIBUS interface are connected to the central 315-2PN/DP processor. Two PC stations are connected via industrial Ethernet to the controller.

Process visualization and control with WinCC v6.2.

Project overview

- 30 drives
- 100 analogue instruments
- 500 digital signals
- Control system with 315-2PN/DP
- 2 OS stations with WinCC v6.2
- 3 ET 200M

- Industrial Ethernet and Profibus DP
- Based on network topologies
- Micromaster 4 frequency drives
- Proces instruments with HART capability



Information about the Siemens Solution Partner Program

Under the Siemens Solution Partner Automation and Power Distribution Program, we join forces with our Solution Partner. By merging our product and systems expertise with the application and industry knowledge of our partners, we have created a common basis for the fast, smooth and highly efficient implementation of your requirement – customized solutions for your competitive advantage.

www.siemens.com/automation/solutionpartner

ELCOM d.o.o.

M.M.Dizdara-Stupine B-2
75 000 Tuzla
Bosnia and Herzegovina
Phone: +387 35 305-700
Fax: +387 35 305-710

www.elcom.ba
info@elcom.ba

