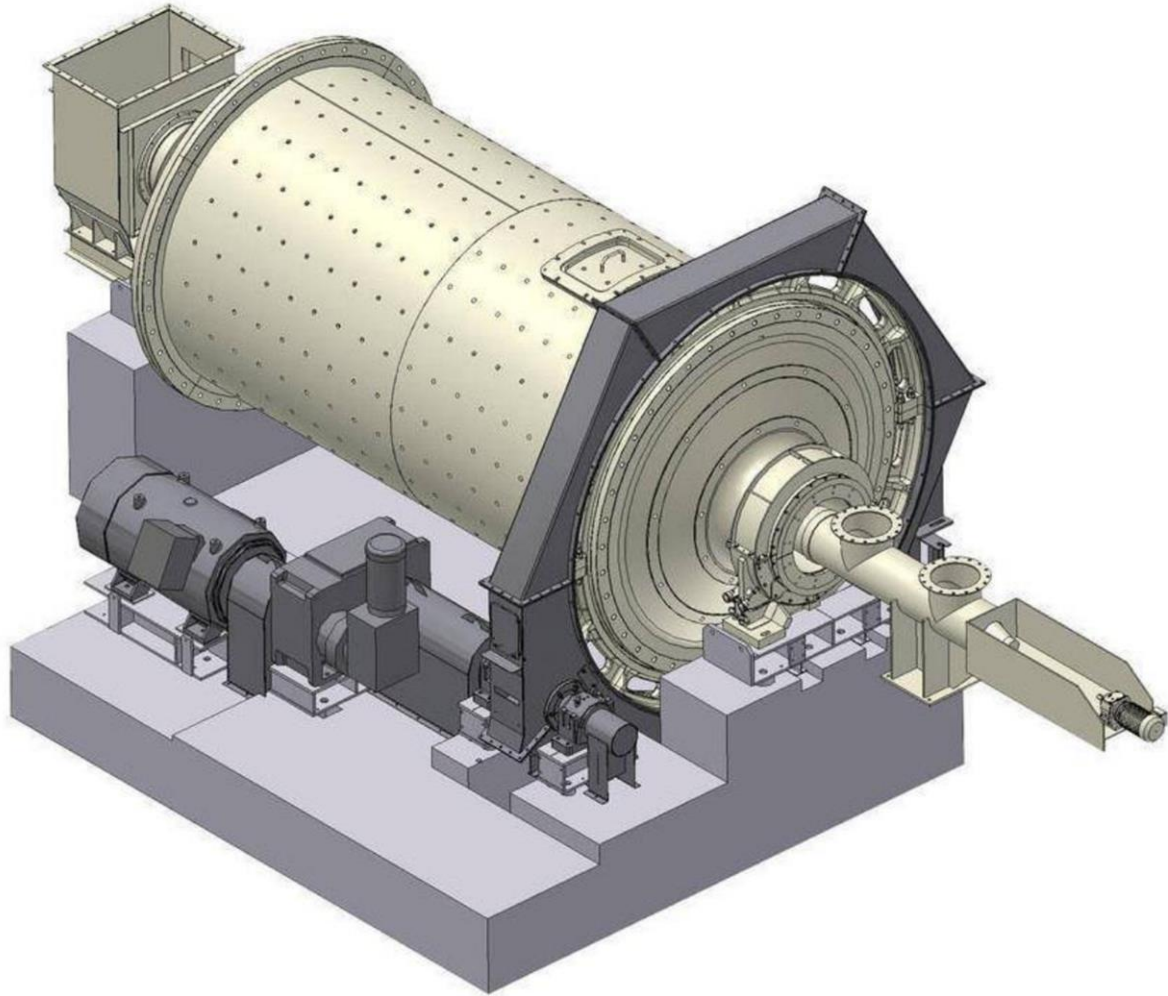
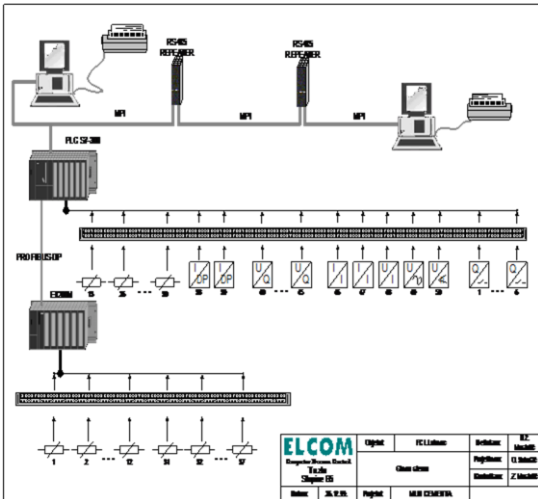


ELCOM d.o.o. is specialized in Totally Integrated Automation (TIA), containing electrical engineering and software development for the automation of production processes and machines, production of MCC and control cabinets as well as onsite installation, commissioning and acceptance testing (FAT, SAT, SIT)



Automation of Cement Mill

Customer: Cement Factory Lukavac, Lukavac BiH



Certificates

We have proven our competence as Siemens Solution Partner Automation in the following areas:

- Automation System SIMATIC
- Human Machine Interface SIMATIC HMI
- Process Control System PCS7

Process description

Cement is a fine powder which sets after a few hours when mixed with water, and then hardens in a few days into a solid, strong material. Cement is mainly used to bind fine sand and coarse aggregates together in concrete. Cement is a hydraulic binder, i.e. it hardens when water is added.

There are 27 types of common cement which can be grouped into 5 general categories and 3 strength classes: ordinary, high and very high. In addition, some special cements exist like sulphate resisting cement, low heat cement and calcium aluminate cement.

Project task

System with automated calculations for giving and tracking set points and control of the cement mill in Cement Factory Lukavac.

System includes control, overview, trending and archiving of measured data.

Solution

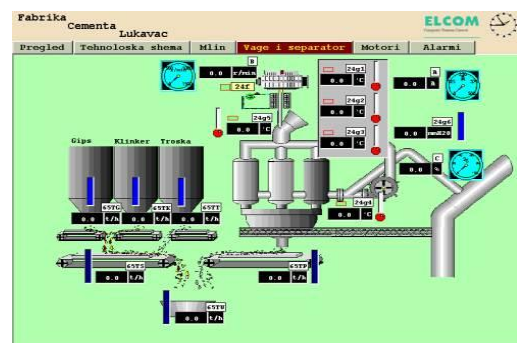
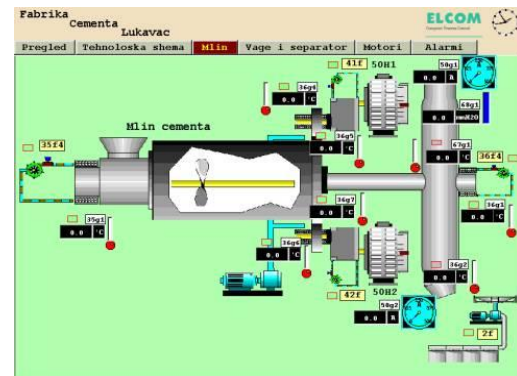
All relevant process data is measured and collected over the sensors and suitable electrical converters from which signals are lead to the control cabinets where the PLCs accept and process the signals.

Measured data is processed and used for calculations of the setpoints for all relevant drives (motors, valves, pumps).

Visualisation of the process is done in software package ProToolPro v5.1. This application offers maximum functionality and a user-friendly interface.

With this configurable and scalable system, there is the advantage of absolute openness to both the office environment and to production. An integrated process database and Plant Intelligence, for example, ensure transparency in production.

Control and supervision of production process is completely automated and centralized, where the complete process is controlled from the control room.



Information about the Siemens Solution Partner Program

Under the Siemens Solution Partner Automation and Power Distribution Program, we join forces with our Solution Partner. By merging our product and systems expertise with the application and industry knowledge of our partners, we have created a common basis for the fast, smooth and highly efficient implementation of your requirement – customized solutions for your competitive advantage.

www.siemens.com/automation/solutionpartner

ELCOM d.o.o.

M.M.Dizdara-Stupine B-2
75 000 Tuzla
Bosnia and Herzegovina
Phone: +387 35 305-700
Fax: +387 35 305-710

www.elcom.ba
info@elcom.ba

